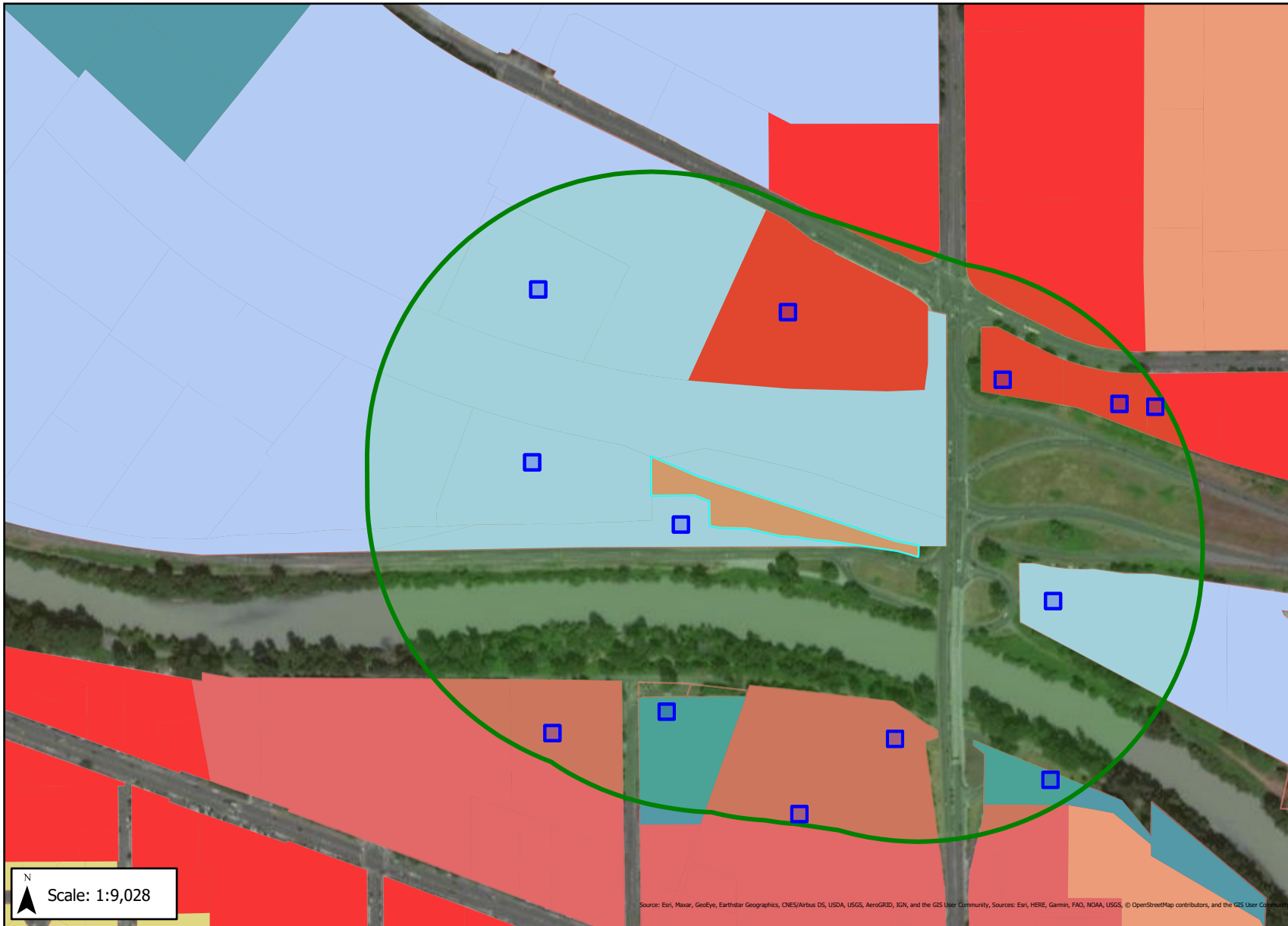
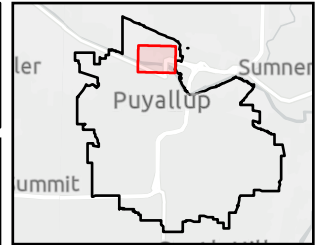


City of Puyallup, Washington

1000' Vicinity Map



Legend

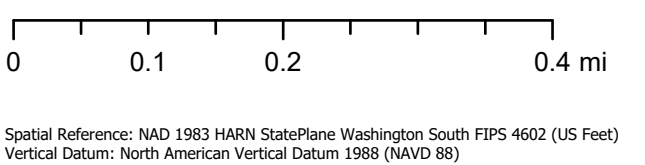
Puyallup Zoning

- CG - General Commercial
- RMX - River Road Mixed Use
- ML - Limited Manufacturing
- RM-20 - High Density Multiple-Family Residential
- RS-06 - Urban Density Single-Family Residential
- PF - Public Facilities

Tax Parcels

- Base Parcel
- Urban Growth Area

Scale: 1:9,028



Map produced using City of Puyallup GIS web apps.

Date: 3/18/2021

The printed information was derived from digital databases within the City of Puyallup GIS Portal. The City of Puyallup cannot accept responsibility for any errors, omissions, or positional accuracy, and therefore, there are no warranties which accompany this product. Users of this information should review or consult the primary data and information sources to ascertain the usability of the information.

Notes: